

Press Release

Craft London Exhibition of Emerging New Talent 8-19 March 2010

A showcase of London-based designer makers - experience the freshest craft and design talent at Craft Central...

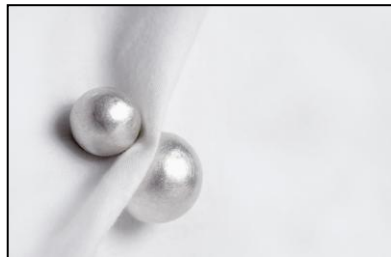
Craft London is funded by The London Development Agency's (LDA) 2012 London Cultural Skills Fund, which is supported by the Mayor of London. This fund will enable a diverse range of art and skills organisations in the capital to put on courses in activities including theatre, dance and music production, writing and design. This is the second round of the £1.2m fund with a further £500,000 to be awarded later this year through round three. Managed by Arts Council England, the fund will help Londoners to improve their employment prospects in the creative industries as well as tap into London 2012 opportunities such as the Cultural Olympiad.



Anna Johnson



Katie Barton



Daniele Geargeoura



Ana Alvarez-Meneses

Venue: Craft Central, 33-35 St John's Square, London, EC1M 4DS

Dates: Open Mon-Fri 8-19 March, 12-6pm

(last day Friday 19 March 12-5pm)

Special Launch Night - Monday 8 March, 5-8pm

Meet the Maker Artist Talk - Thursday 18 March, 6pm

Weekend Opening - Saturday 13 March, 11am-4pm

Admission: FREE!

The selected Craft London exhibitors are:

Katie Barton - Textiles

Anna Johnson - Fabric Accessories

Laura Milligan - Surface Design/Interiors

Hannah James - Ceramics

Ruth Babajide - Ceramics

Jo Davies - Ceramics

Ana Meneses - Silversmithing

Julie Vermeille - Illustration

Daniele Geargeoura - Jewellery

Alexandra Simpson - Jewellery

Yuki Sasakura Assiter - Jewellery

Jessica Light - Passementier (Interiors)

We want Londoners to discover the relevance of craft and design to their city. **Craft London: Exhibition of Emerging New Talent** is a group showcase of new work by London-based 'design stars of the future' - a public chance to experience the freshest craft and design talent at Craft Central's London gallery. The multi-disciplinary show is a celebration of 'home grown' talent and reflects the creative excellence of London's emerging designer makers.

Come and discover these 12 emerging new talents...

Meet **Kate Barton** and her expressive textile pieces, including her topical flock of endearing London pigeons! Imaginatively mixing appliqué, stitch, embroidery and surface embellishment, she is inspired by her surroundings and the beautiful details of everyday life.

Anna Johnson's work focuses on the simple elements of fabric and thread crafted and transformed into exquisite accessories. Bold and fun, but fashionably wearable, her latest work incorporates pom poms! A unique delight - you surely won't be able to resist taking home one of Anna's creations!

Is your house in need of a maker over? Then don't miss **Laura Milligan** and **Jessica Light**. Laura creates fabulous silk-screen wallpapers, with unique modern elegance. Whilst Jessica focuses on the beauty of trimmings and tassels, using inspiration materials such as light reflective and metallic yarn, creating 'jewellery for the home'.

Hannah James' work is hand thrown in porcelain, creating individual vessels that crowd peacefully and delicately together. **Ruth Babajide's** distinctive ceramic storage unit collections, glazed with gold lustre paintings on the surface, are ideal for the perfect kitchen. **Jo Davis** (our third ceramist) will develop one-off pieces - wall based ceramic moulds inspired by the work of William Morris, essentially creating 3D wallpaper.

Illustrator **Julie Vermeille** is fascinated by fairy tales. Her books introduce 3D characters, 'living' in the gallery, a setting made from illustrative prints and mixed materials (handmade fabrics, laces and buttons), creating a world of fantasy you could surely get lost in.

Ana Meneses' striking silverware is inspired by electric architectural views and a sense of London's distinctive atmosphere. Ana's combination of precious metals with other materials adds to the spectacular nature of her work.

Finally our three jewellery designers... **Daniele Gergeoura**, who interestingly creates stunning and playful magnetic jewellery that is marvellously out of the ordinary. Her boldly three dimensional work in precious materials is often spherical and contains magnets and/or stones. **Yuki Sasakura Assiter**, inspired by her own Japanese impressions of beauty in English culture, creates fabulous jewellery which combines metal, fabric, stones and stitching. **Alexandra Simpson** produces romantic, delicate and feminine jewellery. In using materials such as sterling silver, 18ct gold with added diamonds or pearls, her work is exceedingly elegant.

To find out about the Craft London exhibition/exhibitors and for high res images, contact 02072510276 or visit <http://www.craftcentral.org.uk/craft-london-emerging-new-talent>

Notes to the Editor...

Please contact Sarah Hewett or Hazel Stark at Craft Central with any enquiries: 020 7251 0276
sarah.hewett@craftcentral.org.uk hazel.stark@craftcentral.org.uk

Craft Central www.craftcentral.org.uk

Craft Central's dynamic Network connects over 400 UK designer-makers, helping them to discover valuable opportunities and benefit from really practical and well thought-out services and resources. Craft Central takes time to understand makers and encourages them to develop groundbreaking new work. Alongside this support, Craft Central promotes cutting edge craft and design to the public through an exciting programme of innovative exhibitions and events.

Special Services for Industry and Press...

Media and buyers industry are invited to use Craft Central as a resource. Craft Central's current Network includes a portfolio of 500 cutting edge designers producing work in a vast array of disciplines (including; fashion, textiles, accessories, jewellery and interior products). Craft Central can help you source new products, maker's profiles, accessories for shoots, news stories and more.

In order to bring talented designers and trade professionals together Craft Central offers a range of special service for industry and press visitors:

Designer Introductions... Bringing talented designers and trade professionals together.

To maximise your time, Craft Central can arrange a day of meetings providing the chance to view and discuss work by designers selected to match your requirements. International buyers already utilise this service and find it an essential tool when sourcing new products. These meetings take place at Craft Centrals offices in London EC1M. View a selection of Craft Central designers in the online Designer Maker Gallery and just let us know if you would like to organize an appointment!

www.craftcentral.org.uk/designermakergallery

Keeping you in touch... Keep up to date with the hottest design talent!

Throughout the year Craft Central organises an exciting programme of exhibitions and events to promote new work by contemporary designers. Press releases are circulated regularly, but if you have a specific request please get in touch!

To view the latest press releases visit www.craftcentral.org.uk/press-area

To join our mailing list visit www.craftcentral.org.uk/press-mailing-list

The London Development Agency (LDA) aims to improve the quality of life for all Londoners - working to create jobs, develop skills and promote economic growth.

Arts Council England (ACE) works to get great art to everyone by championing, developing and investing in artistic experiences that enrich people's lives. As the national development agency for the arts, we support a range of artistic activities from theatre to music, literature to dance, photography to digital art, and carnival to crafts. www.artscouncil.org.uk

The 2012 London Cultural Skills Fund is worth £1.2m over two years with award grants ranging from £25,000 - £50,000 to projects across London. These could be anything from multi-media skills gained through a film project, to set design or set construction skills gained through work in a theatre.



Supported by
**ARTS COUNCIL
ENGLAND**



**craft
central**

